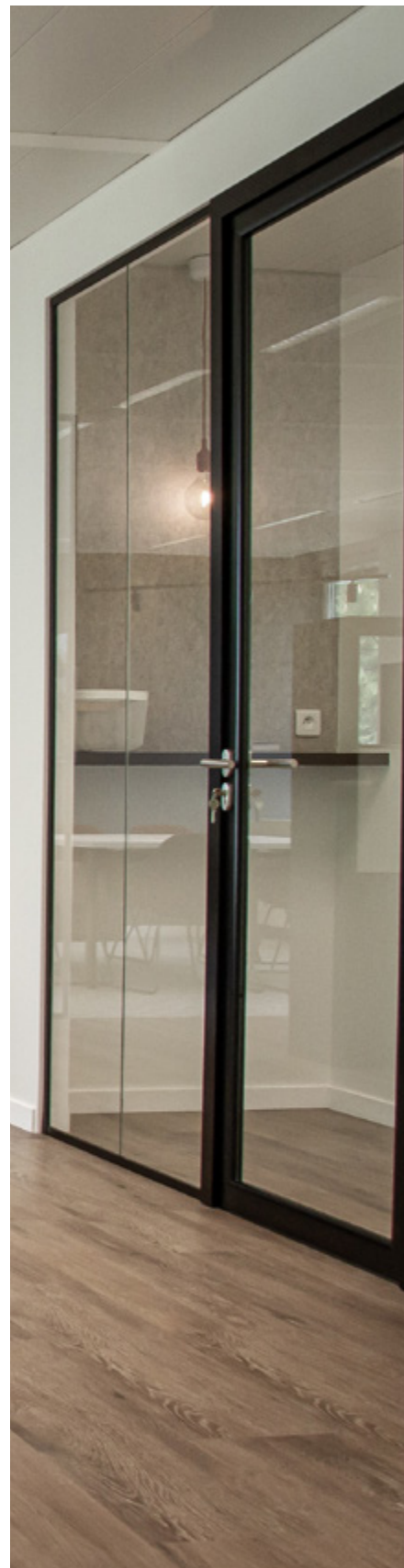


JUUNOO

THE WALL
THAT PAYS OFF.





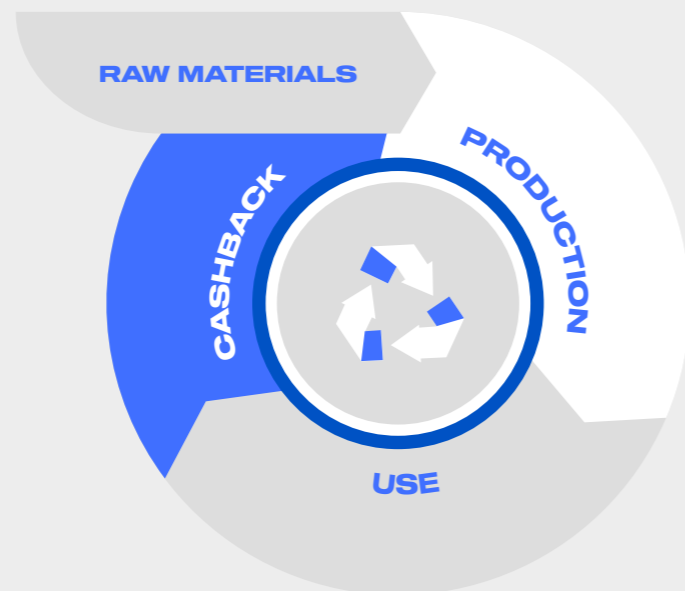
CONTENT

- 04 THE WALL THAT PAYS OFF**
- 06 QUICK, BEAUTIFUL, CIRCULAR**
- 12 KEEP THE BODY, CHANGE THE SKIN**
- 16 FINISHES**
- 20 GLASS WALLS**
- 22 PROBOX**

The wall that pays off

Did you know that more than the equivalent of **EUR 300 billion in walls are thrown away every year**? Not only is this an enormous waste of money and resources, but also negatively impacts our climate and the current geopolitical situation. The time has come for us to take action together. At JUUNOO, we therefore see it as our moral duty to completely reinvent the construction industry. Every product that is installed in a building today should be developed with a view to being recycled and reused. In other words, it must be **circular**.

And that's exactly what we do at JUUNOO. We developed a reusable interior wall that will not be demolished when it reaches the end of its life cycle, but can be dismantled and reused. We call it the **wall that pays off**, because our walls make money at the end of their lives instead of costing money. To prevent our modules from ending up on a landfill, we at JUUNOO offer a **cashback guarantee**. Are you sure you can no longer use your walls? Then we will be happy to buy them back from you! That way, they immediately get a second life.



“Dad, you knew about it. What have you done about it?”



In **2017**, Chris Van de Voorde decided it was time for change. He realized that if we really want to achieve something, we have to think big. And so he founded JUUNOO. What motivates Chris day-in-day-out to keep moving forward? His **children** Juul and Noor (who were also the inspiration behind our company name).

“If you look at the climate crisis, you can do two things. Either shrug your shoulders or do something about it. I started JUUNOO so I don't have to face my children one day and tell them I didn't do anything. I want to be able to look them straight in the eye when they ask me about the climate crisis and what I did about it. My ultimate principle? That I can give my children a better world than the world I live in today.”

Did you know that...

... the steel we use for our modules consists of at least 40% recycled raw materials and that our decorative click panels are made of more than 85% recycled wood?



Faster than the speed of light*

Our JUUNOO walls can be installed up to **7 times faster** than a traditional partition wall. Thanks to our innovative and patented system, our walls click together at top speed. And what you quickly click together, can also quickly be disassembled. This way, you can easily reconfigure them down the line.

By the way, we designed the click system in such a way that you only need **one professional** to install your new partitions. Our walls click together so easily that it doesn't even have to be a specialist. This also saves you money on installation costs.

Hey good lookin', what you got cookin'?

A JUUNOO wall has options for any interior. Would you like a timeless white wall? Do you prefer bold prints on the wall? Or would you like to incorporate nature with one of our durable wood finishes? Thanks to the variety of **finishing options**, you can fully adapt your walls according to your unique style.

And since we know it's all in the details, we developed a system that fits together seamlessly. Not only does it look beautiful, it also has excellent **acoustic performance** to reduce unwanted sound transmission in your space. So you don't have to worry about your colleague talking loudly on the phone, or your boss brainstorming out loud again.

It's the circle of life, and it moves us all

A JUUNOO wall can be **placed and moved endlessly**. That's not only sustainable, it also ensures that every space can evolve along with your needs at the right time. Because what you choose today will preferably stand up in a few years' time. JUUNOO makes ecological sense.

While JUUNOO walls may be sustainable, we promise you that they are **not more expensive**. Because you can reuse our walls or receive a cashback when you no longer need them, the cost of a JUUNOO wall is not higher than that of a classic wall. It's quite the opposite. Our walls are traditional not only good for the planet, but also for your wallet!

Did you know that...

... you can reuse your JUUNOO modules that have been screwed in up to **10 times** and that you can reuse our panels with JUUNOO Blue Tape up to **30 times** without losing strength?



Keep the body, change the skin

Our JUUNOO system consists of steel modules (or **body**) to which a final finish (or **skin**) is attached. All our modules are adjustable in height up to 5.5 meters. This way, you will not have any loss of cutting or material, even if you want to use the modules again in a later project. So you're gonna trade that high ceiling studio for a low ceiling new-build office? Then you can easily adjust the modules.

After placing the body, you can choose from a range of various skins and accessories to finish your wall. Choose from finished decorative panels, paintable click panels or reusable gypsum panels. Would you rather have glass walls? That's possible too! For the finishing touch, you can finish your wall with a beautiful skirting board or a stylish corner finish. Thanks to the clever design, we offer solutions that are rated for fire safety, stability and acoustics.

Say goodbye to the stress of having to choose!

The decision when it comes to most wall systems, is final. You only get to choose once. If you want something different later, there is usually nothing else to do but tear down the wall and start again. Fortunately, this is not a problem with JUUNOO. Thanks to our **patented click system**, you can easily disassemble the walls. Do you want a stylish black wall today, but decide you would prefer the natural beauty of wood later on? No problem! Your installer simply unclicks the wall and installs your new finish in less than a day.



I'm blue da ba dee da ba di

You can quickly attach our finishing panels with the reusable JUUNOO Blue Tape. This way you do not damage the wall and you can easily detach the panels afterwards to place them elsewhere.

Hello from the inside

Our modules look just like a classic metal stud, the difference being that you can reuse JUUNOO modules, even if the height dimensions in your space would need to be changed.

Handy and compact

The system consists of a combination of I-modules (to fill most of the wall), C-modules (to start and stop) and D-modules (for the doors). All modules are foldable and compact, perfect for storage or transport.

Also, thanks to their telescopic feature, you no longer have to cut them yourself. That saves a lot of work. Our modules are always equipped with the handy JUUNOO Blue Tape, so that the panels can be placed in no time.

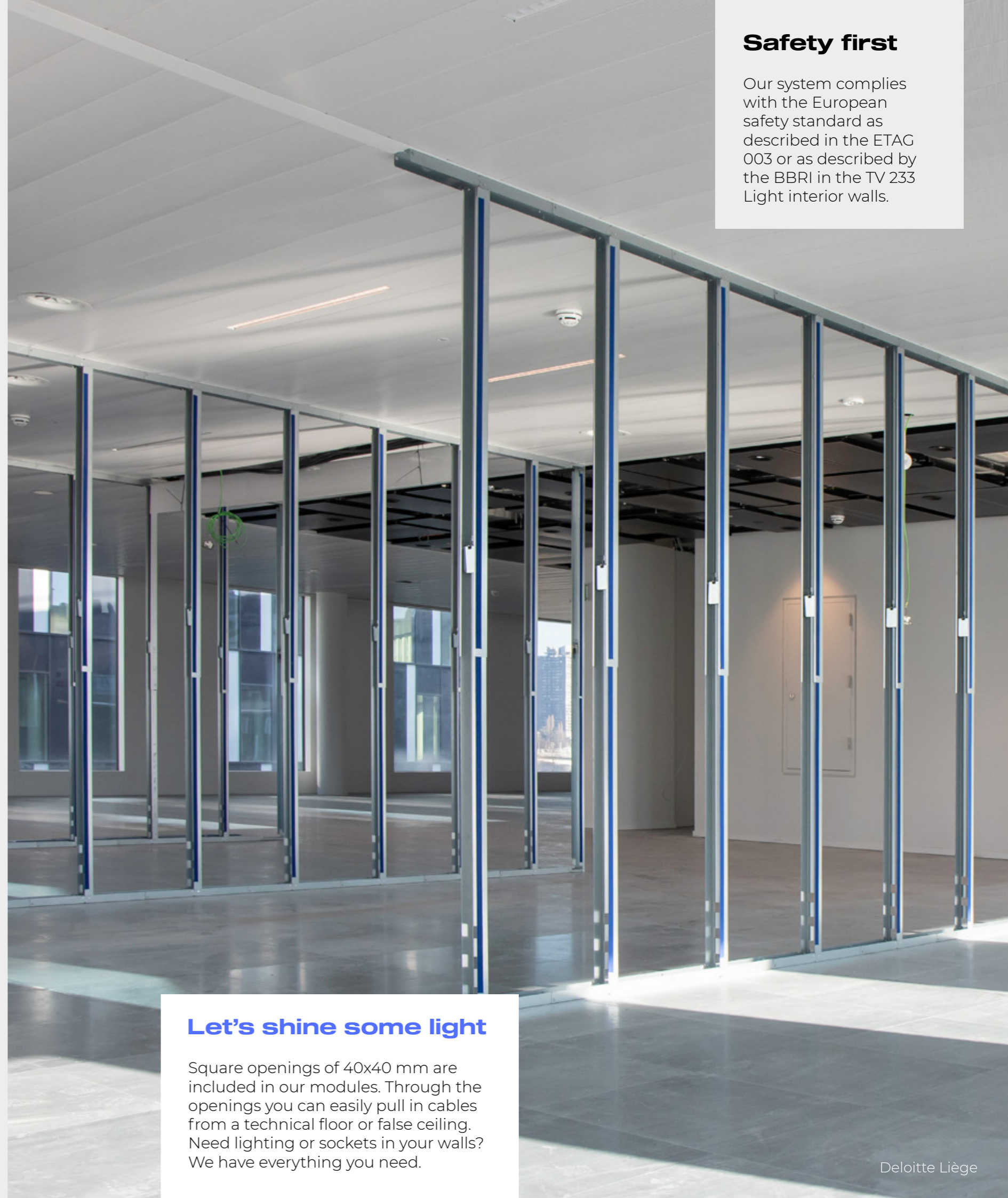
Strong as steel

Our steel modules have a minimum wall thickness of 0.8 mm. This makes them stronger and easy to reuse. At the end of their service life, they are 100% recyclable.

All structural modules seamlessly connect to other building materials, such as wood or steel. This gives you full freedom to customize, while keeping the original features of your building.


Safety first

Our system complies with the European safety standard as described in the ETAG 003 or as described by the BBRI in the TV 233 Light interior walls.



Let's shine some light

Square openings of 40x40 mm are included in our modules. Through the openings you can easily pull in cables from a technical floor or false ceiling. Need lighting or sockets in your walls? We have everything you need.



paintable panels

decorative click panels

What's your flavor?

Because every office and every room has its own character, we like to see this reflected in the interior. That's why you can choose from a wide range of finishes and accessories to make your wall truly unique.

Painting and wallpaper

Do you like to put a different color on the wall every now and then? Then choose our paintable click panels or gypsum walls. Our click panels are specially treated so you can paint and wallpaper them.

Stylish decorative panels

Looking for a little extra oomph? Then choose our decor click panels. These melamine-coated panels are made of 100% circular wood and will give your space that added bit of style. Are you curious about the possibilities? With 137 sets to choose from, there's always one that fits!

Finishing touch

To complete your wall, you can choose from various stylish accessories. Looking for a timeless wooden skirting board, or do you prefer sleek aluminum? You can also finish the outside and inside corners according to your own taste. This gives your JUUNOO wall that unique touch that fits perfectly within the style of your office.

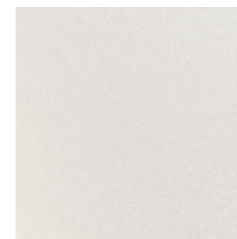
More examples and inspiration can be found at www.juunoo.com/cases.



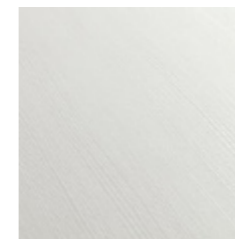
It's oh so quiet

All our paintable and decor click panels are available in a BaseClick, AcouClick and SilentClick version. The quieter you want to make the room, the higher the acoustic values of your panel will be. The choice is yours!

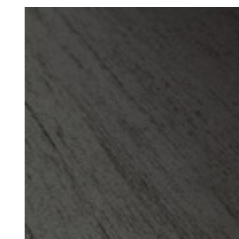
Decor panels



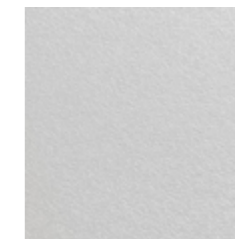
025 CST
Front White



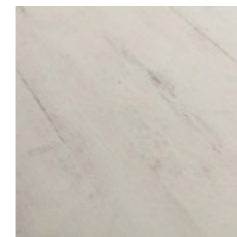
025 W03
Front White



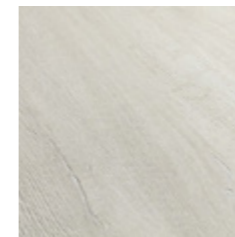
113 W06
Elegant Black



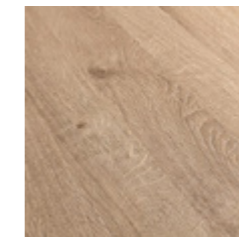
625 CST
Silicon



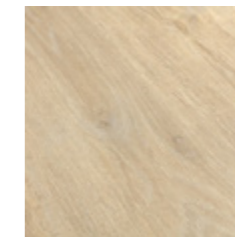
H163 BST
Flakewood White



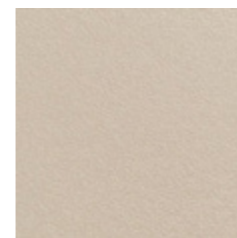
H450 V9A
Heritage Oak
Light Patina



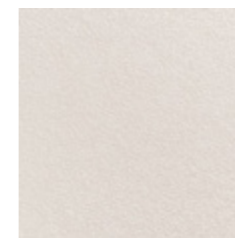
H588 V8A
Royal Oak Vanille



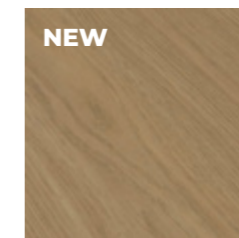
H784 W06
Robinson Oak
Light Natural



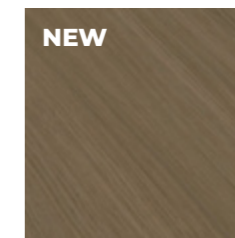
U127 CST
Dune Beige



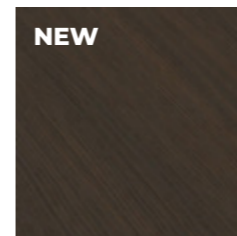
U147 CST
Seashell



NEW
H915 V2A
Master Oak
Light Natural



NEW
H914 V2A
Master Oak
Double Fumed



NEW
H912 V2A
Master Oak Brown



NEW
CWE28 V21
Everest White CC

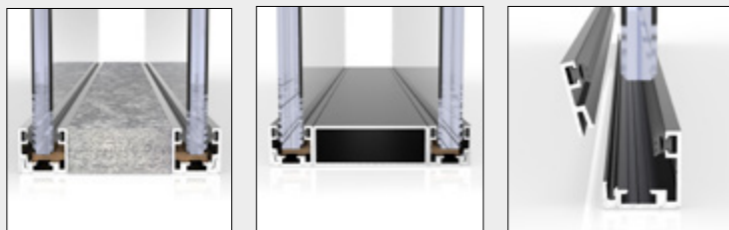
Light it up

A glass partition wall is the perfect solution for organizing your office in a quick and functional way. With a **glass partition wall**, you can quickly create bright spaces where employees can focus on their work without losing contact with their colleagues.

Not only does a glass wall look amazing, thanks to our acoustic glass partitions, they also dampen surrounding noise, so you and your colleagues can work without distraction. This way, you can meet quietly and you will not be disturbed during your work or meetings.

Thanks to the many finishing options, our glass partitions perfectly match the style of your office. Do you want some more privacy? Our partitions can be easily combined with a full office wall.

JUUNOO glass partitions are available in both single and double-glazing. For the glass profile, choose black or white powder coating or an anodized glass profile. By the way, you don't need silicone for our circular glass. This way you always get clean results!



Did you know that...

that the extra absorption in our glass provides up to 5dB extra sound insulation compared to other systems?



Did you ever think inside the box?

At JUUNOO we most certainly do! Because with our **Probox**, you can boost productivity in the office instantly. A Probox can be set up in 1 day, without dust, noise or damage to the existing space. It's also easy to place and move, and has a stylish and seamless finish.

No need for an enclosed workspace for a while? You can switch the walls of the Probox back on as partitions. This is how the layout of your office evolves with your company.

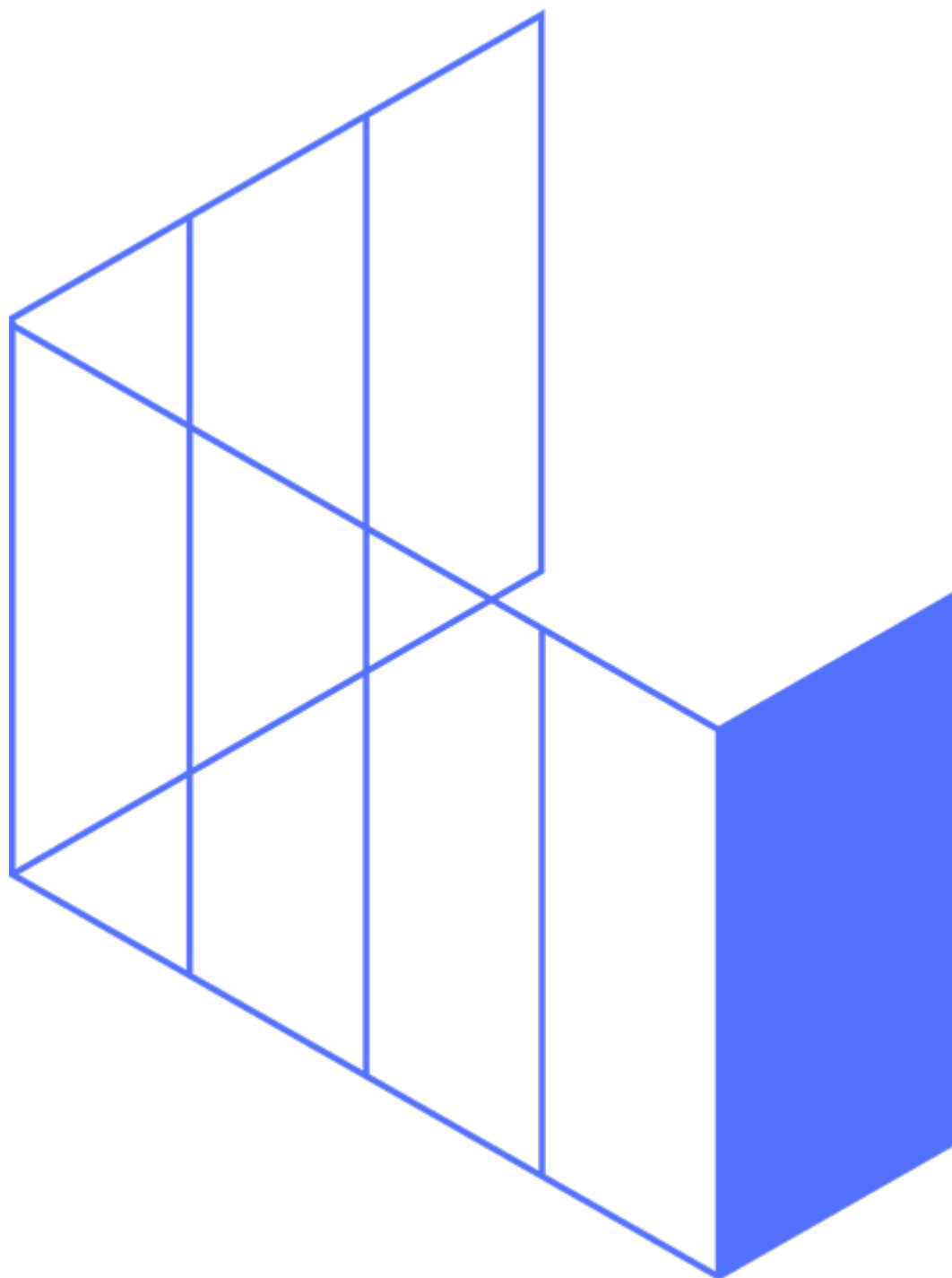


Uno, dos, tres

Our Probox can be ordered in different versions, depending on your needs. It is available for 1, 2 or 4 people, or you can have it designed completely to measure. The choice is yours!

JUUNOO

THE WALL
THAT PAYS OFF.



JUUNOO NV
Blokkestraat 51
B-8550 Zwevegem
+32 (0)56 44 18 90

INFO@JUUNOO.COM
WWW.JUUNOO.COM