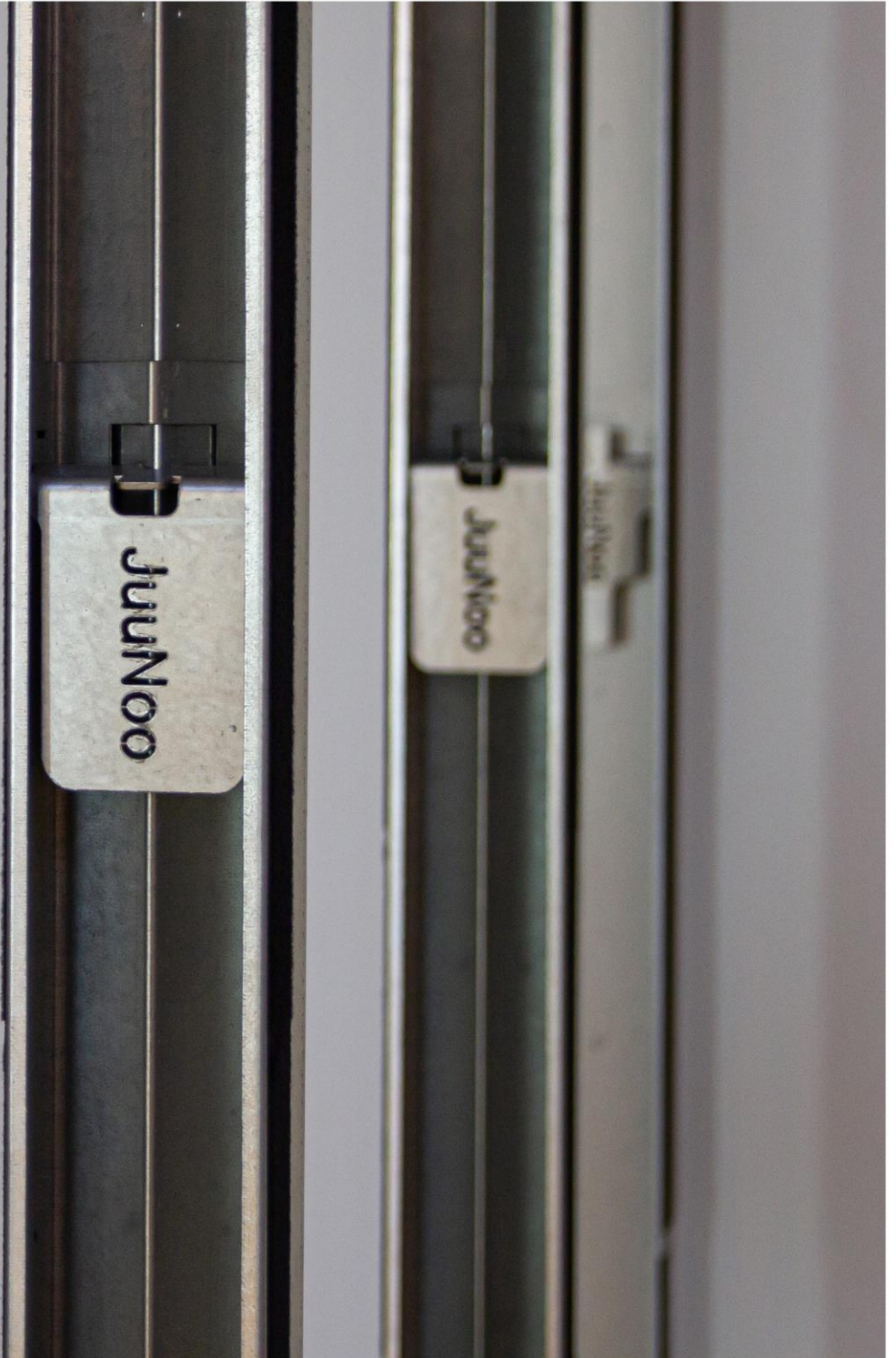


JUUNOO offers lightweight internal wall systems that are not thrown away when they reach the “end of their life”: instead, they’re dismantled for use in a new wall!
If the customer wishes, JUUNOO will simply buy back the materials.



JUUNOO NV
Blokkestraat 51
8550 Zwevegem,
Belgium

+32 (0)56 44 18 90
info@juunoo.com
www.juunoo.com

1 Purpose of the buyback guarantee

JUUNOO has poured its passion and energy into developing and marketing a system that is 100% circular. In other words, our products can be dismantled and reassembled over and over again without compromising their functional characteristics. In principle, there is no reason why the JUUNOO lightweight wall models will not still be in use in a hundred years' time. Now that's added value!

Ideally, we don't want to see a single one of our panels thrown away or recycled in that time. And that's why we offer a buyback guarantee. We make it more financially beneficial to sell the modules and panels back to the manufacturer than to dispose of them.

We deliberately set our repurchase price guarantee to be lower than the effective residual value of the product. Ideally, we'd like the panels and modules to be sold directly between builders, so that as one room or building is taken down, it yields up the materials for a new room or building. We want to ensure product chains are as short as possible so that the emissions generated between two usage cycles are likewise kept to a minimum.

2 What do we buy back?

We buy back materials providing they have been dismantled and delivered to Courtrai. If necessary, JUUNOO can provide a quote for undertaking this work (transport and/or dismantling).

The material must be checked and sorted per the instructions below. If required, JUUNOO can also provide a quote to do this for you.

2.1 Modules

Modules must not have any damage that could affect their functionality.

Specifically:

- it must be possible to slide the modules open and shut.
- the horizontal profiles of the modules must click together by means of the quick-click system.
- the clamping system must still be capable of applying the necessary pressure and tension to the profile, so that the frame does not slip downwards under its own weight.
- bulges or dents may not extend further than 3 mm from the side surface of the frame, so that panels can always be fitted properly to the modules.
- modules that were screwed to their surroundings during assembly must not have more than two additional screw holes in the horizontal parts. To avoid rejection due to this point, you can always just use the screw holes that are already there. Alternatively, the modules can be secured to their surroundings using adhesive. See the technical document for more information about when it is safe to do this.
- screw holes in the vertical parts must not have any burrs, as these can hinder the sliding action of the modules. If panels need to be screwed into the JUUNOO modules, the best way to do this is using self-drilling screws – this approach avoids burrs.

The modules must be delivered stacked and sorted on pallets.

2.2 Panels

The following panels can be returned under the JUUNOO buyback guarantee:

- BaseClick
- AcouClick
- SilentClick
- Habito

Panels must not have any damage that could affect their functionality.

Specifically (JUUNOO - Click):

- panels must click together properly and the tongue-and-groove joint must be secure and airtight.
- the tongue and groove may not exhibit more than 5 cm of damage over the full height of the panel, so that functionality and airtightness can be guaranteed.
- only panels with a full wall thickness will be considered (minimum 2300 mm).
- only full-width panels will be considered.
- there must not be any visual damage to the front of the panel.
- panels must not have any adhesive residue.
- the JUUNOO tape on the rear of the panel must be in good condition.

Specifically (Habito):

- the panel must not have any visual defects, e.g.:
 - cracks
 - missing parts
 - damaged corners
 - holes for utility cables
 - etc.
- panels must not have any adhesive residue.
- only panels with a full wall thickness will be considered (minimum 2300 mm).
- only full-width panels will be considered (600 or 1200 mm).
- the panels must be completely clear of joint sealing strip.
- holes drilled in the region of the joint sealing strip are acceptable; a maximum of 10 holes may be drilled in the open region.

The panels must be delivered stacked on pallets, sorted by color and height.

2.3 Glass

The following glass elements can be returned under the JUUNOO buyback guarantee:

- Glass panels of the different types of glass with “circular economy” dimensions (900 x 2355 mm)
- Glass doors with “circular economy” dimensions (900 x 2310 mm), provided as a complete set, with working handle, and no visual defects (see specification above).

The glass panels must be provided in good condition.

Specifically:

- glass panels and doors must be free of visual defects such as:
 - scratches
 - cracks
 - adhesive residue

2.4 Meeting pods

The following pods can be returned under the JUUNOO buyback guarantee:

- Call 1
- Focus 1
- Connect 2
- Connect 3
- Connect 4
- Connect 6
- Made to order based on circular economy principles

Modules must not have any damage that could affect their functionality.

Specifically:

- the box must be returned as a complete assembly kit.
- the various components must meet all the specifications described earlier in this document.
- all electric components must be in good working order (tested by connecting to mains power).
- all fittings and mounts must be included.

We recommend dismantling the meeting pods by following the installation instructions in reverse order – this is the best way to check everything is present and correct.

We can always supply the installation instructions on request.

If the pod has already been dismantled and reused for a wall, or if a check finds that parts are missing for some other reason, you can still return the remaining components as loose parts, providing they meet the specifications above. NB: We pay more for the box as a complete unit than the sum of the loose JUUNOO products! The material must be delivered stacked on pallets, sorted by type and color.

3 What do we do with the materials we accept?

The JUUNOO products that we buy back will be given a second life via our network. In other words, they will be used in one of our future projects.

4 What do we do with the materials we reject?

You can still return material to us, even if it doesn't meet our conditions. It must always be sorted by type and sent on a separate pallet.

Wherever possible, we will remove the defective parts and replace them with new parts. If a repair is not possible, we will recycle the materials properly and use them as raw material for new products.

5 How much do we pay for repurchased products?

All the products that we sell at JUUNOO have a repurchase value. It's included on all our quotes. So, before you ever install a JUUNOO product, you already know how much cash it will yield at the end of its stay with you.

If you've lost your quote, just get in touch with JUUNOO.

If you bought your wall via a contractor, your contractor should have given you the JUUNOO certificate at the same time. The certificate constitutes part of the quote. You can find the repurchase value of your JUUNOO products on this certificate. So, when your JUUNOO product is installed, you already know how much cash it will yield at the end of its stay with you.

If you've lost your quote, just get in touch with JUUNOO.

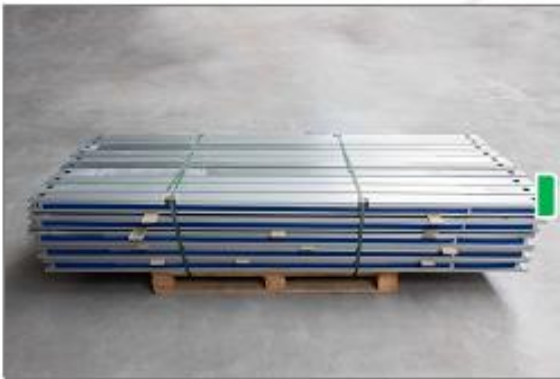
- Modules with blue tapes 30% of the catalog price (at month of purchase)
- Modules without blue tape 20% of the catalog price (at month of purchase)
- Panels 10% of the catalog price (at month of purchase)
- Glass 20% of the catalog price (at month of purchase)
- Meeting Pods dependent on type (at month of purchase)

6 How to return your products – visual guide

PANELS



MODULES



JUUNOO
THE WALL
THAT PAYS OFF.

